

iPanel LED Panel Light

-replacement for traditional downlights, with dimming and emergency



Ordering

iPanel-XXX-AA-BB-CCC

XXX= size

240 = DIA240mm 180=DIA180mm

AA = color temperature

CW =5700-6300K, NW=4000-4500K , WW=2700K-3200K

BB = DD for Dali driver or SD for standard driver

CCC = DEM for Dali emergency driver or X if the feature not require

iPanel TL-SPL-240-CW-DD-DEM

=DIA240mm panel in cool white, with Dali driver and Dali emergency driver

ACCESSORIES AVAILABLE

Both recessed or surface mounted

Edge-lit technology,
ultra-slim 12mm



LOW GLARE DIFFUSER

Natural white 4000- 4500K make comfortable working environment.

LOW MAINTENANCE COSTS

50,000 hrs lifetime. Up to 5 times that of a traditional downlight

Features

Energy Saving

Typical energy saving is >50% when compared to fluorescent

Easy Installation

Complete with male/female connectors

Zero Maintenance

Additional savings are achieved as no maintenance is required.

Class A Energy Efficiency

>80lm/w

Extra savings via Dimming

Dali, Triac, 0/1-10V, Wi-Fi dimming are available.

Emergency

Compatible with Tlsanli 2/3H emergency packs

Environmentally Friendly, CO2 Savings.

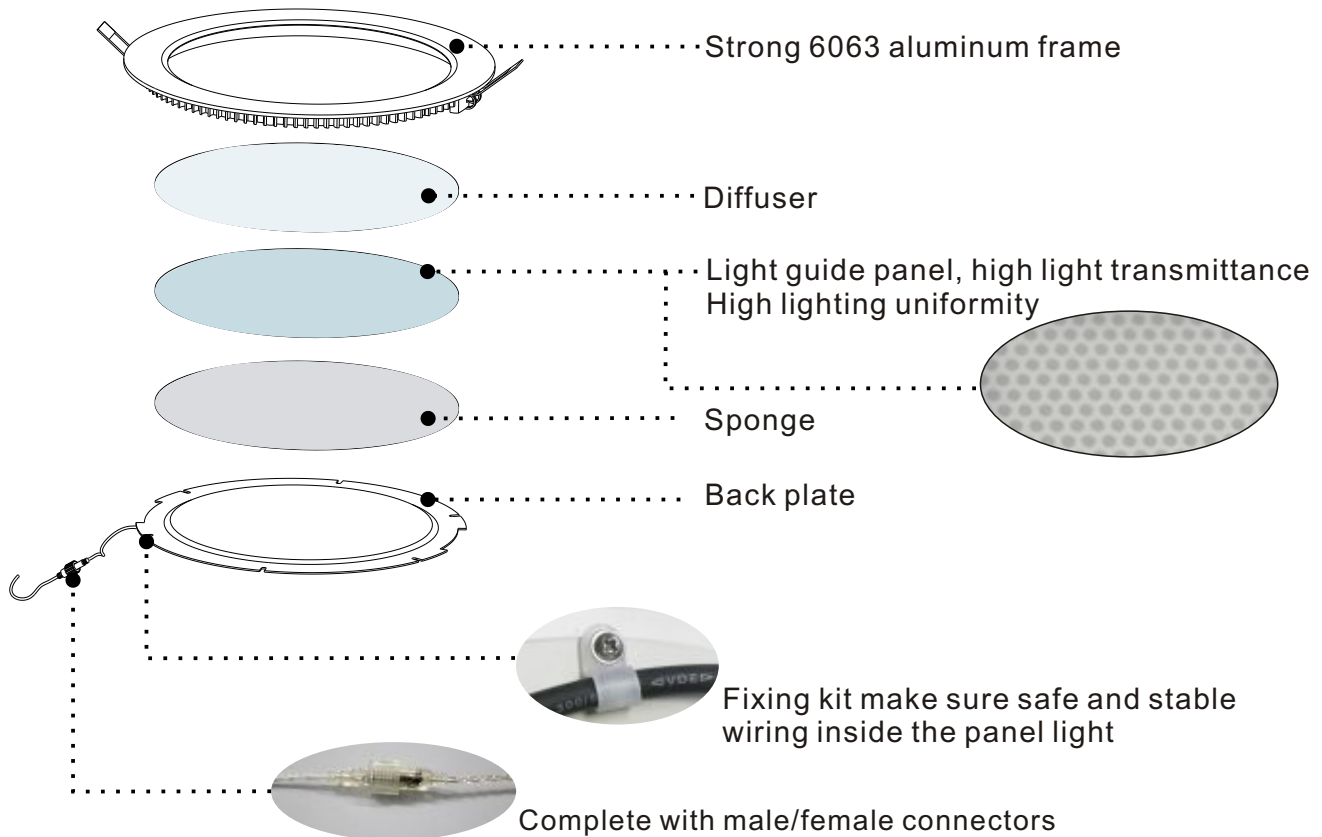
Contain no glass, mercury, phosphor or lead



Application

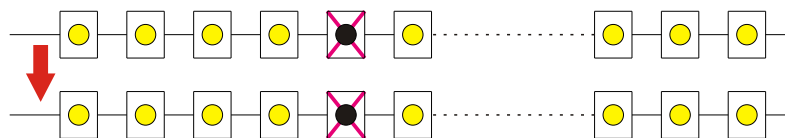
Hospitals, conference centres , offices, reception areas, Hotels, restaurants, schools, libraries, Retailer outlets and shopping centres, Supermarkets, factories

Revolutionary Structure Design



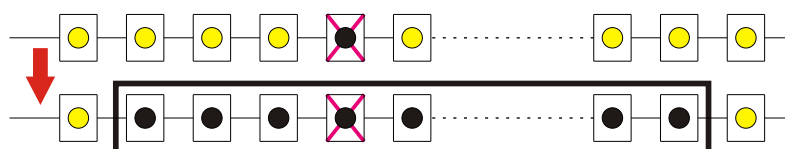
Unique PCB design of Tlsanli

Unique PCB design, each group of LEDs work separately, avoiding any problem of lighting output caused or influenced by single faulty LED.



Other design in the market

Mostly not independent unit, if one LED fails in the series circuit, the whole series will stop work and dark patch occur.

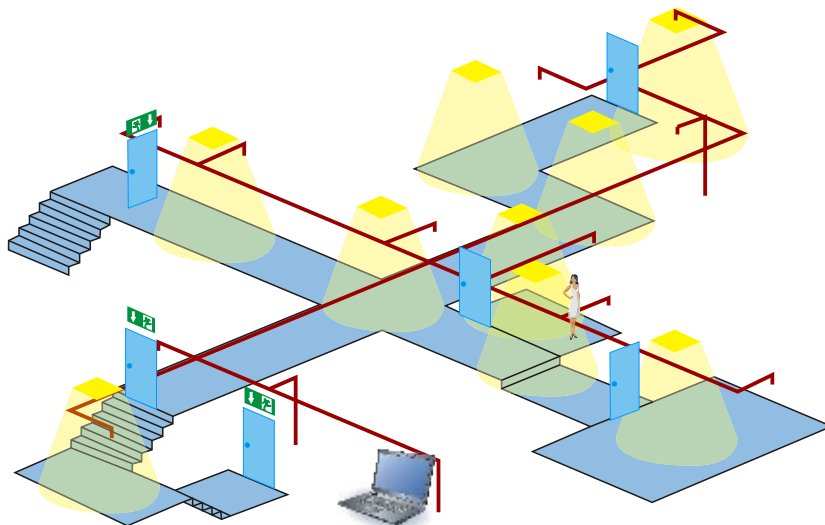


If one SMD fails, the whole series circuit will stop work.



DALI Intelligent Dimming

(On/Off, dimming by DALI modules or controllers for system control.)



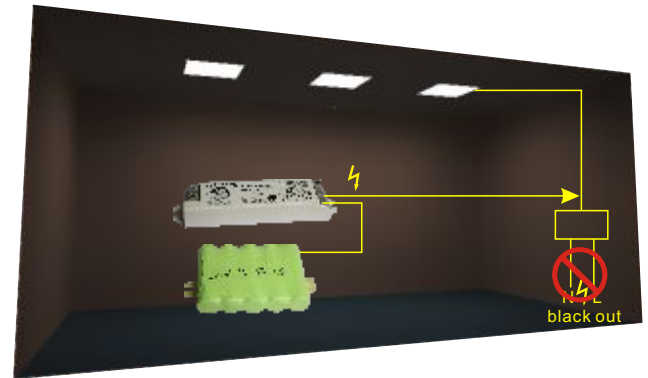
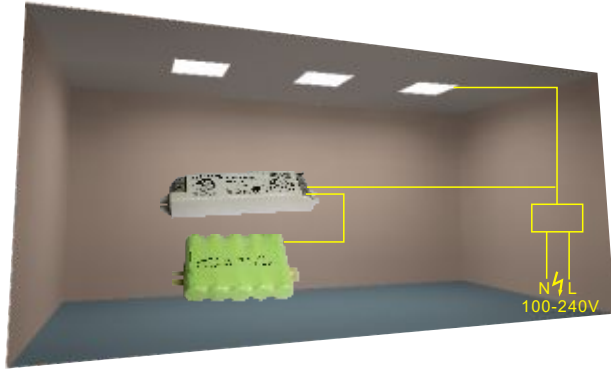
SCR/0-10V/1-10V/ Wi-Fi dimming options





Optional 3H Emergency Packs

Compatible with Dali self-testing emergency packs or regular 3 hours emergency packs.



Technical Data

Model No.	iPanel TL-SPL-180	iPanel TL-SPL-240	iPanel TL-SPL-300
Dimension	Dia240*H20, Φ163mm	Dia240*H20, Φ226mm	Dia300*H20, Φ280mm
Power	10 watt	12/18 watt	24 watt
Light Output	700 lm	900/1350 lm	1920 lm
Material	PMMA+Aluminum	PMMA+Aluminum	PMMA+Aluminum
Frame Color	Matt white/ Aluminum	Matt white/ Aluminum	Matt white/ Aluminum
Input Voltage	AC100-240V, 50/60Hz	AC100-240V, 50/60Hz	AC100-240V, 50/60Hz
LED	SMD(2835) passed LM-80	SMD(2835) passed LM-80	SMD(2835) passed LM-80
Color Temp	Cool, natural, warm white	Cool, natural, warm white	Cool, natural, warm white
CRI	>80Ra	>80Ra	>80Ra
Sealing	Ip43	Ip43	Ip43
Power Factor	>0.95	>0.95	>0.95
THD	<20%	<20%	<20%
Beam Angle	120°	120°	120°
Lifetime	>35,000hrs	>35,000hrs	>35,000hrs
Guarantee	3 years	3 years	3 years
Certifications	CE , RoHS , TUV	CE , RoHS , TUV	CE , RoHS , TUV
Weight	1.3KG/unit, 6 units/ carton	2KG/unit, 6 units/ carton	1.8KG/unit, 5 units/ carton