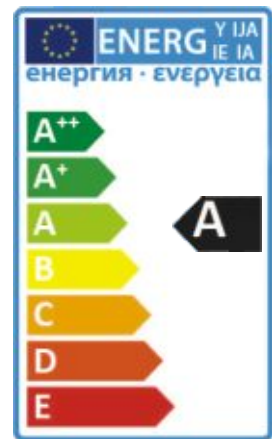


# iPanel LED Panel Light

-replacement for fluorescent luminaires, with dimming and emergency



TUV-CE (EMC) TA380130384

TUV-CE (LVD) TA380130310.

## Ordering

iPanel-XXXX-AA-BB-CCC

XXXX= size

6060 = 600X600mm 3030=300x300mm

AA = color temperature

CW =5700-6300K, NW=4000-4500K , WW=2700K-3200K

BB = DD for Dali driver or SD for standard driver

CCC = DEM for Dali emergency driver or X if the feature not require

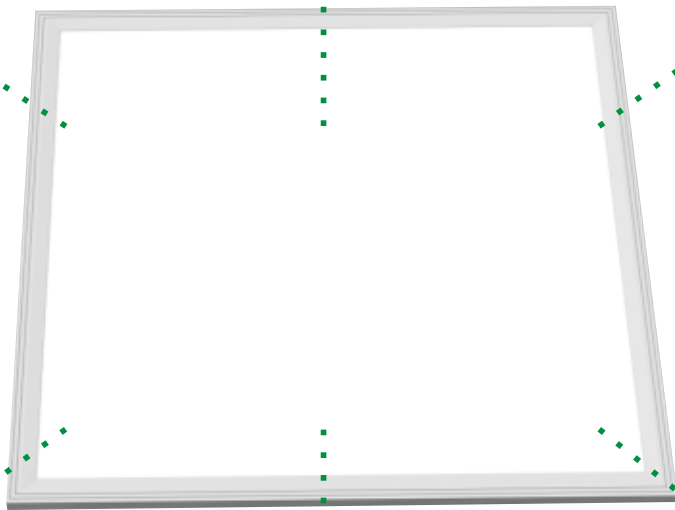
iPanel-6060-CW-DD-DEM

=600X600mm panel in cool white, with Dali driver and Dali emergency driver

**EDGE-LIT TECHNOLOGY**

**LOW PROFILE DESIGN**  
Fits in standard ceiling grid sizes

**ACCESSORIES AVAILABLE**  
Both Brackets for surface mounted & Suspension kits in 1M



**LOW MAINTENANCE COSTS**  
50,000 hrs lifetime. Up to 5 times that of a std fluorescent.

**LIGHT OUTPUT**  
Equal to 4 x 18W fluorescent module.

**LOW GLARE DIFFUSER**  
Natural white 4000- 4500K make comfortable working environment.

## Features

### Energy Saving

Typical energy saving is >50% when compared to fluorescent

### Easy Installation

Complete with male/female connectors

### Zero Maintenance

Additional savings are achieved as no maintenance is required.

### Class A Energy Efficiency

>80lm/w

### Extra savings via Dimming

Dali, Triac, 0/1-10V, Wi-Fi dimming are available.

### Emergency

Compatible with Tlsanli 2/3H emergency packs

### Environmentally Friendly, CO2 Savings.

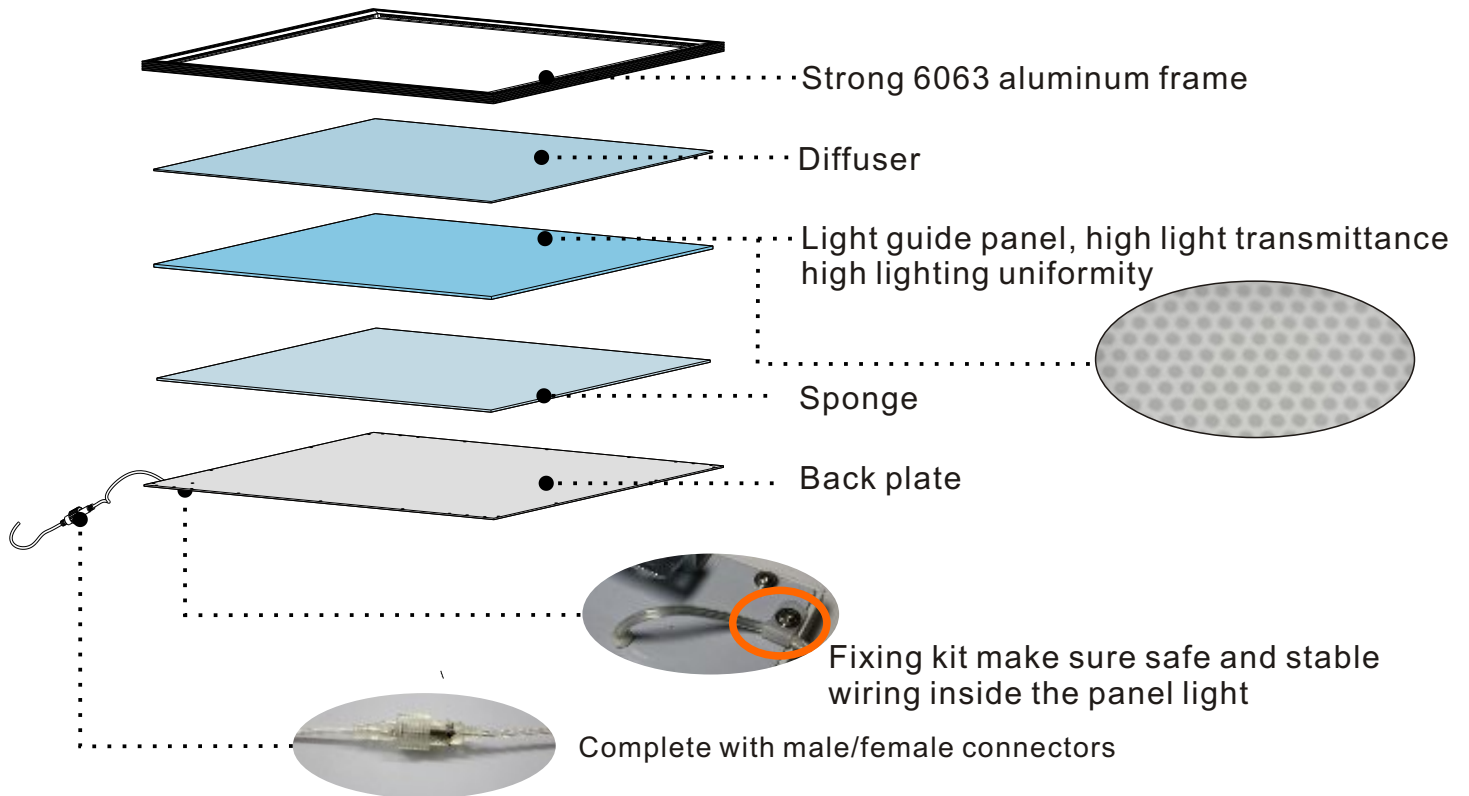
Contain no glass, mercury, phosphor or lead



## Application

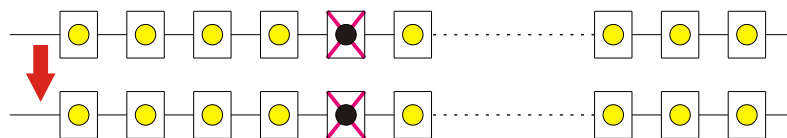
Hospitals, conference centres , offices, reception areas, Hotels, restaurants, schools, libraries, Retailer outlets and shopping centres, Supermarkets, factories

## Revolutionary Structure Design



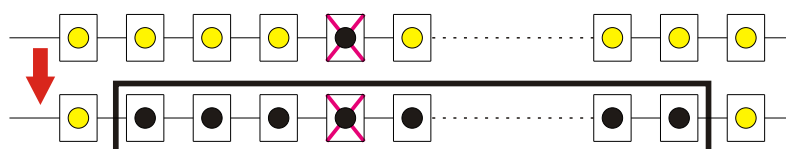
## Unique PCB design of Tlsanli

Unique PCB design, each group of LEDs work separately, avoiding any problem of lighting output caused or influenced by single faulty LED.



Other design in the market

Mostly not independent unit, if one LED fails in the series circuit, the whole series will stop work and dark patch occur.

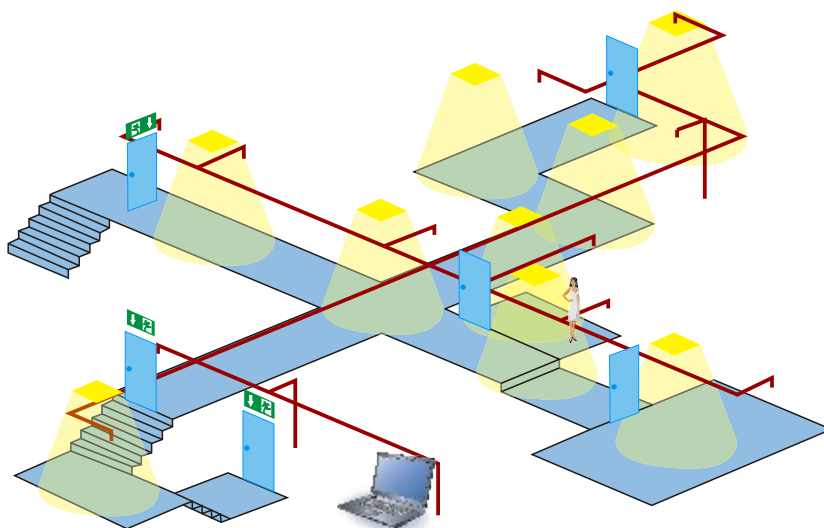


If one SMD fails, the whole series circuit will stop work.

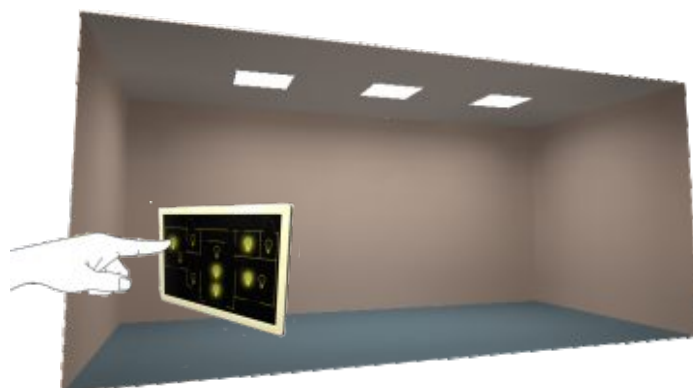


## DALI Intelligent Dimming

(On/Off, dimming by DALI modules or controllers for system control.)



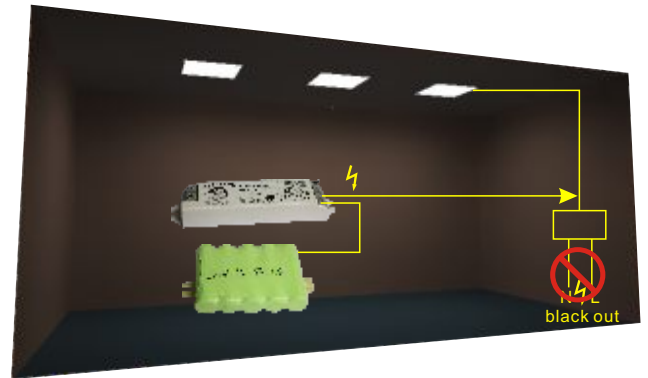
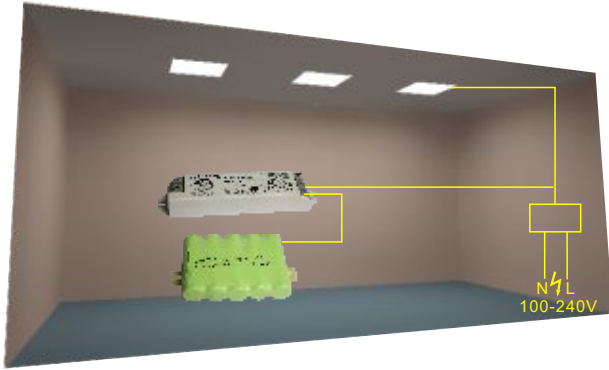
## SCR/0-10V/1-10V/ Wi-Fi dimming options





## Optional 3H Emergency Packs

Compatible with Dali self-testing emergency packs or regular 3 hours emergency packs.



## Technical Data

Model No.	iPanel-6060	iPanel-3030
Dimension	595x595x10 mm	300x300x10 mm
Power	30/36/40/45/60 watt	12/18 watt
Light Output	2550/3096/3363/3825//4920 lm	876/1350 lm
Material	PMMA+Aluminum	PMMA+Aluminum
Frame Color	Matt white/ Aluminum	Matt white/ Aluminum
Input Voltage	AC100-240V, 50/60Hz	AC100-240V, 50/60Hz
LED	SMD(2835) passed LM-80	SMD(2835) passed LM-80
Color Temp	Cool, natural and warm white	Cool, natural and warm white
CRI	>80Ra	>80Ra
Sealing	Ip43	Ip43
Power Factor	>0.95	>0.95
THD	<20%	<20%
Beam Angle	120°	120°
Lifetime	>35,000hrs	>35,000hrs
Guarantee	3 years	3 years
Certifications	CE , RoHS , TUV	CE , RoHS , TUV
Weight	7.5KG/unit, 5 units/ carton	4KG/unit, 5 units/ carton