

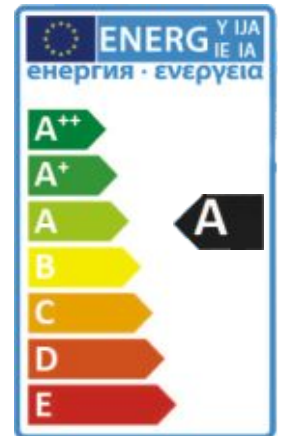
# iPanel LED Panel Light

-replacement for fluorescent luminaires, with dimming and emergency



TUV-CE (EMC) TA380130384

TUV-CE (LVD) TA380130310.



## Ordering

iPanel-XXXX-AA-BB-CCC

XXXX= size

6060 = 600X600mm    3030=300x300mm

AA = color temperature

CW =5700-6300K, NW=4000-4500K , WW=2700K-3200K

BB = DD for Dali driver or SD for standard driver

CCC = DEM for Dali emergency driver or X if the feature not require

iPanel-6060-CW-DD-DEM

=600X600mm panel in cool white, with Dali driver and Dali emergency driver

## EDGE-LIT TECHNOLOGY

## LOW PROFILE DESIGN

Fits in standard ceiling grid sizes

## ACCESSORIES AVAILABLE

Both Brackets for surface mounted & Suspension kits in 1M

## LOW MAINTENANCE COSTS

50,000 hrs lifetime. Up to 5 times that of a std fluorescent.

## LIGHT OUTPUT

Equal to 2x 36W fluorescent module.

## LOW GLARE DIFFUSER

Natural white 4000- 4500K make comfortable working environment.

## Features

### Energy Saving

Typical energy saving is >50% when compared to fluorescent

### Easy Installation

Complete with male/female connectors

### Zero Maintenance

Additional savings are achieved as no maintenance is required.

### Class A Energy Efficiency

>80lm/w

### Extra savings via Dimming

Dali, Triac, 0/1-10V, Wi-Fi dimming are available.

### Emergency

Compatible with Tlsanli 2/3H emergency packs

### Environmentally Friendly, CO2 Savings.

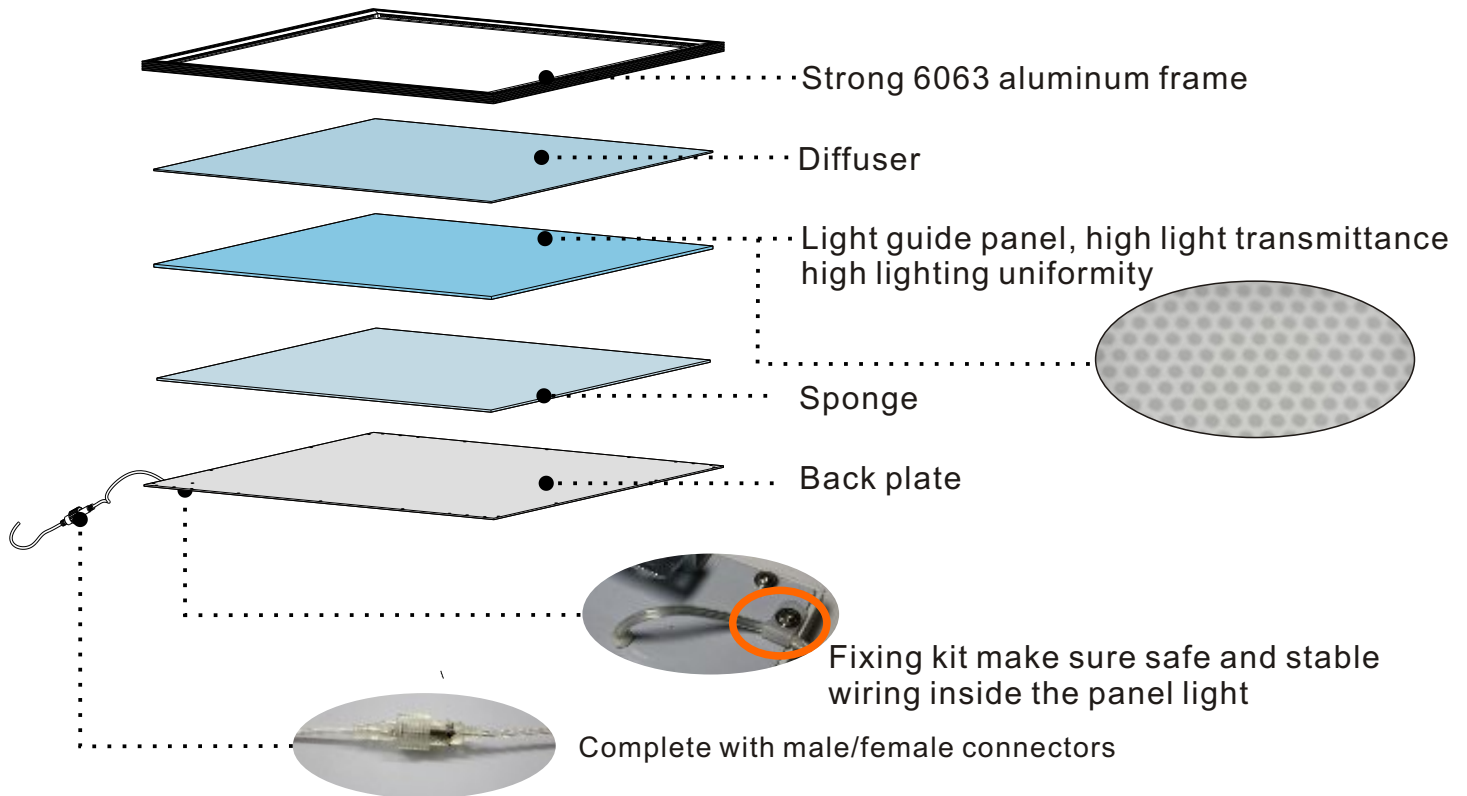
Contain no glass, mercury, phosphor or lead



## Application

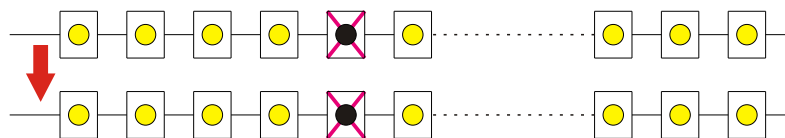
Hospitals, conference centres , offices, reception areas, Hotels, restaurants, schools, libraries, Retailer outlets and shopping centres, Supermarkets, factories

## Revolutionary Structure Design



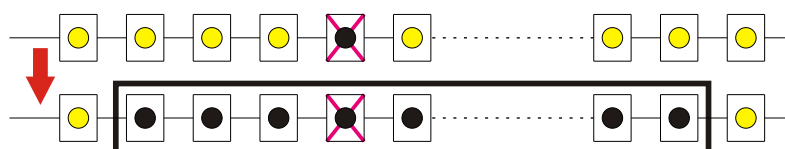
## Unique PCB design of Tlsanli

Unique PCB design, each group of LEDs work separately, avoiding any problem of lighting output caused or influenced by single faulty LED.



Other design in the market

Mostly not independent unit, if one LED fails in the series circuit, the whole series will stop work and dark patch occur.

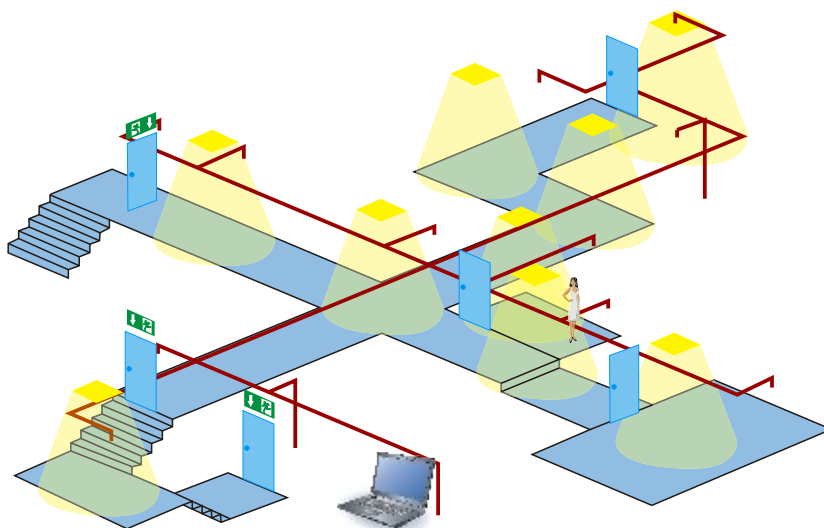


If one SMD fails, the whole series circuit will stop work.

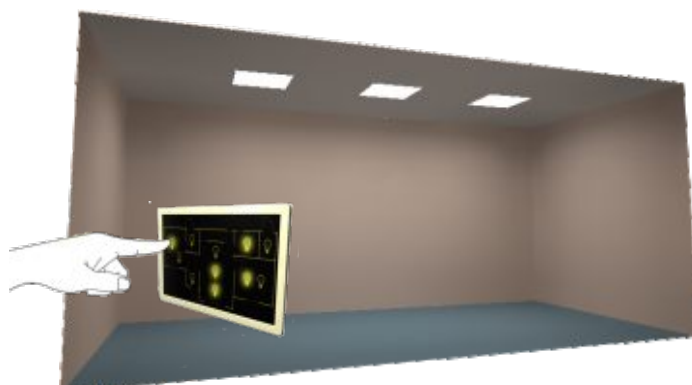


## DALI Intelligent Dimming

(On/Off, dimming by DALI modules or controllers for system control.)



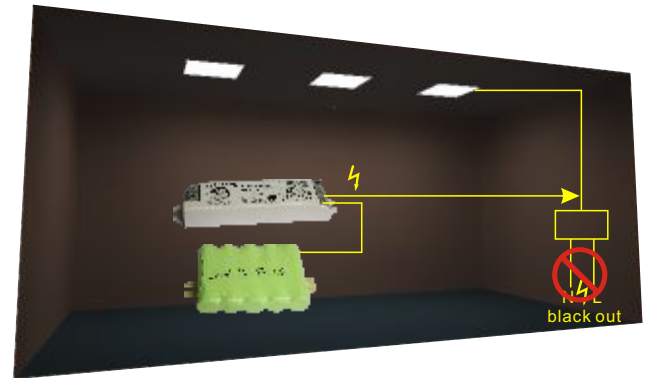
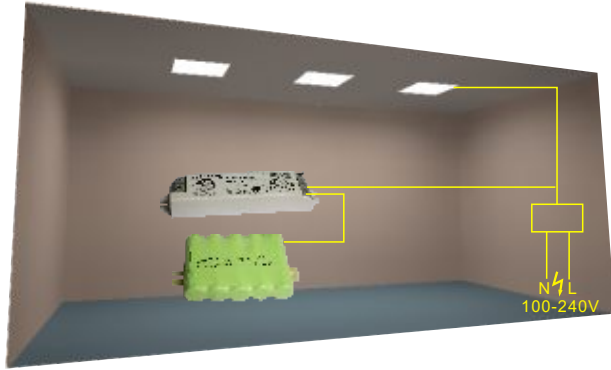
## SCR/0-10V/1-10V/ Wi-Fi dimming options





## Optional 3H Emergency Packs

Compatible with Dali self-testing emergency packs or regular 3 hours emergency packs.



## Technical Data

Model No.	iPanel-3060	iPanel-30120	iPanel-60120
Dimension	300*600x10 mm	295x1195x10 mm	595x1195x10 mm
Power	30 watt	36/45/60watt	60/70 watt
Light Output	2460 lm	2916/3555/4680lm	4740/5460lm
Material	PMMA+Aluminum	PMMA+Aluminum	PMMA+Aluminum
Frame Color	Matt white/ Aluminum	Matt white/ Aluminum	Matt white/ Aluminum
Input Voltage	AC100-240V, 50/60Hz	AC100-240V, 50/60Hz	AC100-240V, 50/60Hz
LED	SMD(2835) passed LM-80	SMD(2835) passed LM-80	SMD(2835) passed LM-80
Color Temp	Cool, natural, warm white	Cool, natural, warm white	Cool, natural, warm white
CRI	>80Ra	>80Ra	>80Ra
Sealing	Ip43	Ip43	Ip43
Power Factor	>0.95	>0.95	>0.95
THD	<20%	<20%	<20%
Beam Angle	120°	120°	120°
Lifetime	>35,000hrs	>35,000hrs	>35,000hrs
Guarantee	3 years	3 years	3 years
Certification	CE , RoHS , TUV	CE , RoHS , TUV	CE , RoHS , TUV
Weight	3.5KG/unit, 5 units/ carton	7.5KG/unit, 5 units/ carton	15KG/unit, 5 units/ carton